

Shine a Light

BRIGHTENING LIVES IN JOHNSON COUNTY

A Fundraising Event hosted by Friends of Johnson County Mental Health Center



Thursday, September 5, 2024 | 6 p.m.

Overland Park Arboretum and Botanical Gardens



Hello, friends! Join us in shining a light on unmet mental health needs in Johnson County.

I invite you to join Friends of Johnson County Mental Health Center as a sponsor for this year's Shine a Light event, our organization's third annual fundraiser.

Shine a Light brings together mental health professionals, community advocates, and local partners for a celebration of the work being done to support mental health in Johnson County, but it is also an opportunity for us to spotlight unmet mental health needs in our community.

Last year, our focus was housing. As housing options in our area become increasingly unaffordable and alternatives remain scarce, Friends of Johnson County Mental Health Center responded to a record number of requests for rent and utility assistance from JCMHC clients in 2023—totaling nearly \$25,000. Thanks to the generous support of sponsors like you, Shine a Light raised funds to pay rent and utility bills and keep those clients focused on their mental health treatment and recovery. **Your support made a direct, immediate difference in our community.**

Your sponsorship this year will continue to have a positive impact on the work of Friends of Johnson County Mental Health Center, a nonprofit 501(c)(3) organization supporting Johnson County Mental Health Center's mission to improve quality of life for Johnson County residents by providing comprehensive, accessible mental health services.

Specifically, your sponsorship will help Friends:

- **Support** Johnson County Mental Health Center services and programs, including the Co-Responder Program, Suicide Prevention Coalition, and #ZeroReasonsWhy.
- **Help** Johnson County Mental Health Center clients meet their basic needs, like food, clothing, housing, job placement and medical expenses, to allow them to focus on their mental health and well-being.
- **Work** with community partners to raise awareness of mental health services and programs, encourage conversations about mental health, and reduce stigma surrounding mental illness.

You will find more information on this year's event and our sponsorship levels in this packet. We will have dinner and dessert, special guests and awards, and hear the inspiring mental health journey of a featured speaker. I cannot wait for us all to be together again at this year's Shine a Light.

As we continue working to meet the mental health needs of our community as it changes and grows, I am grateful for your commitment to a brighter future through building a healthier community and improving access to mental health care and resources.



Tim DeWeese
Director, Johnson County Mental Health Center

About the event:

New location: Overland Park Arboretum



This year's event will be at the LongHouse Visitor Center at the Overland Park Arboretum and Botanical Gardens. Surrounded by scenic beauty, the LongHouse Visitor Center welcomes guests to the Overland Park Arboretum and Botanical Gardens with panoramic views of gardens, woodlands, and ponds. Indoor and outdoor spaces will give our event a beautiful backdrop for the evening, allowing for celebration and connection with both mental health and nature. Shine a Light is your chance to see one of Johnson County's newest and most beautiful gathering spaces.

Beacon of Hope Award

The Beacon of Hope Award is presented annually at Shine a Light to a community mental health advocate who has been a guiding light in supporting people living with mental illness in our community.

Pictured is last year's recipient, Carol Kladuson, whose mental health advocacy work in Johnson County and Kansas spans over 40 years.



North Star Award

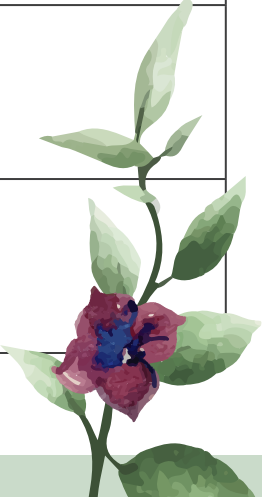
The North Star Award is presented annually at Shine a Light to Johnson County Mental Health Center employees who shine brightest in their service to their clients and co-workers. The award provides recognition for mental health professionals serving on the front line in Johnson County and celebrates the positive impact they have on our community. Employees who receive the North Star Award are nominated by their peers at Johnson County Mental Health Center.

Pictured is one of last year's winners, Sarah Haupt.



Sponsorship levels and benefits

	Luminary \$15,000	Radiance \$10,000	Spotlight \$7,500	Beacon \$5,000	Lantern \$3,000
Event Tickets	3 tables (24 guests)	2 tables (16 guests)	1 table (8 guests)	1 table (8 guests)	4 guests
Event Program	Full Page Ad	1/2 Page Ad	1/2 Page Ad	1/4 Page Ad	Logo only
Name & Logo Placement at Event	On all event materials, including on tables and in the slide show	In the slide show	In the slide show	In the slide show	In the slide show
Name & Logo Placement on Website	✓	✓	✓	✓	✓
VIP Package	✓	✓	✓		
Featured in Social Media Posts	✓	✓	✓		
Opportunity to Provide Takeaways at Event	✓	✓	✓		
On-Stage Mentions	✓	✓			





2024 Sponsorship Participation Agreement

Shine a Light: Brightening Lives in Johnson County

Benefitting Friends of Johnson County Mental Health Center

Thursday, Sept. 5, 2024 | 6:00 p.m. | Overland Park Arboretum and Botanical Gardens

Sponsor Information

Company Name: _____ Contact Email Address: _____

Contact Name/Title: _____ Contact Phone Number: _____

Company Address: _____ City/State/Zip: _____

Sponsorship Level

We would like to commit to the following *Shine a Light* sponsorship level:

- Luminary \$15,000
- Radiance \$10,000
- Spotlight \$7,500
- Beacon \$5,000
- Lantern \$3,000

Payment Method

We will be paying with the following method:

- Check enclosed, made payable to *Friends of Johnson County Mental Health Center*
- Please send an invoice to enclosed address
- Please charge the listed credit card

Type of credit card: ___ Visa ___ Mastercard ___ Discover Card Number: _____

Name on Card: _____ Expiration Date: _____ 3 Digit Security Code: _____

RETURN YOUR COMPLETED AGREEMENT TO:

ATTN: Jo Chavez
Johnson County Mental Health Center
6000 Lamar Ave, Suite 130
Misson, KS 66202